

MADELONDON 2025

MADE LONDON's long-awaited return to London was in 2023 at Angel Islington, before we moved back to our much-loved original venue at ONE MARYLEBONE for October 2024. Last year's show was busy, with exhibitors and buyers alike delighted to be back at this wonderful venue.

For 2025, we have been able to keep costs down and stands are actually less expensive than in 2024 and 2023. Although that means that we need to fill every space at full price in order to have the budget to market the show effectively. Please see the full details of costs below.

DATES

Public Opening

Friday 10th October 12 - 5 (last Entry 4:30)

Saturday 11th October 10:30 - 5 (last Entry 4:30)

Sunday 12th October 10:30 - 5 (last Entry 4:30)

Evening Drinks Reception/Makers' evening

Friday 10th October 6-8:30pm

Set Up

Thursday 9th October 4-9pm

Packdown

Sunday 12th October 5pm -8pm

VENUE

MADE LONDON is located at One Marylebone - a stunningly converted Sir John Soane church close to Regent's Park, opposite Great Portland Tube Station in Central London. The venue is easily reached from all parts of London via underground and bus services, and from outside London via the nearby train stations at Marylebone, Euston, King's Cross and St Pancras.

The show will take place over all 4 floors of the venue - with a café and bar on the lower Crypt level.

EXHIBITION SPACES

THE SOANE HALL is on the ground floor adjacent to the entrance and is the old nave of the Church.

THE GALLERIES are on the first floor and is a beautiful light-filled space with large Georgian windows. Spaces on these two levels will be provided with stand shells and lighting.

THE CRYPT MEZZANINE is downstairs and spaces are well lit, suitable for table top displays, but without a shell scheme. We have more availability on the Crypt Mezzanine this year, and aim to attract makers who might be new to selling at fairs or who want to try MADE at an entry-level price before committing to a spot with a shell scheme in the Galleries or Soane Hall. We can supply a table and a cover or you can bring in furniture or a cabinet - well-lit jewellery stands out beautifully in the crypt location.

THE CRYPT is the lowest floor and is the location of the café and bar, with room for demonstrations and discussion events. More details to follow on these features.

SET UP

Set up will be from Thursday afternoon into the evening with some time on Friday morning for final adjustments before the show opens.

We'll have a timed unloading rota on Thursday afternoon and evening.

APPLYING & SELECTION

Applications are invited worldwide from individual makers, groups of makers and craft based galleries.

Makers wanting to share spaces must be individually selected (and apply individually) and the number of makers must be reflected in the size of the space requested. We will require images of each maker's work to be shown, whether sharing individually or within a studio group or gallery.

We require your CV or artist statements and a minimum of 4 representative images of each maker's work, clearly labelled; your name, title, medium and size (please don't state the price).

APPLICATIONS ARE ONLY ACCEPTED ONLINE, VIA OUR WEBSITE.

Your photographs **must** be JPEGS and each under 2mb (1200 pixels wide is about right). Please triple check the sizes as often we are sent images that look smaller than 2mb, but when placed in an app, are actually larger. Images being too big is the most common reason for applications failing to send. Do not apply by email as emails are easily mislaid.

Once the form has uploaded you will not be able to edit it, so please check it over carefully.

You will receive an email acknowledgement that your online form has arrived safely.

If you are a GROUP or GALLERY with more than 2 exhibitors, apply on one form uploading 8 images but please make sure you leave a full list and website of every maker - we do look at every applicant's website.

If there are 2 of you wanting to SHARE A SPACE both makers should **apply separately**. Please mention who you would like to share with. If selected each will get a separate web and catalogue entry.

Selection is a task that we take seriously and it can take many weeks to look through the applications, narrow down the applicants and select a balanced exhibition. We charge an application fee of £10 + VAT to cover the time of the selection committee.

DEADLINE

Applications are invited any time before Midnight on Sunday 13th April. Selection will be made by the selection committee during April and you should be notified mid/late April.

SPACES

Spaces in Soane Hall and the Galleries come with a display shell scheme and lighting. The boards are a hollow plywood covered frame, painted white. They are 8ft high and 50mm deep.

While they will support a reasonable hanging weight, if you are hanging anything particularly heavy it should be hung from the top. Work can be hung from screws or mirror plates.

****Please allow for the possibility of the stand being up to 10 cm smaller than stated due to the width of the walls – most will be 5 cm smaller – the size stated is the total external measurement not the internal measurement.**

Spaces in front of the windows in the Galleries do not have a full rectangular shell scheme as we want to keep the windows clear to make the area feel spacious and light.

Spaces on the Crypt Mezzanine level do not come with a white shell scheme. Tables and covers can be supplied or furniture/cabinets can be brought in. Lighting will be supplied. Our most affordable space is a table in the Mezzanine for £350 + VAT. Our most affordable space with a shell scheme is 1.75 x 1m space on the first floor Galleries, with a partial shell.

We have found that a minimum of stand furniture works best with our shell scheme.

Spotlights are adjustable. Your name board will be written as you specify on your application form. The lighting should be ample but extra spots can be fitted on request.

If you are unable to take credit card payments (or your system fails) we can take payments on your behalf.

We also provide porters to assist with set up and break down, free exhibitors' cloakroom, inclusion in the catalogue containing exhibitor information and website listing.

PAYMENT

We require a 33.3% deposit to be paid within 7 days after notification of selection to guarantee reservation of your space. The balance can be paid in instalments in June and August or in one payment on acceptance. Full payment **must** be made by 1st September or you may forfeit your deposit and we will offer your stand to another maker.

DATES

Stand Build

Thursday 9th October 4pm - 9pm: Makers to unload and set up.

Friday 10th October 8am - 11:30pm: Makers to unload and set up.

Public

Friday 10th October 12am - 5pm: Event opens to the public (last entry 4:30pm)

Friday 10th October 6pm - 8:30pm: Evening drinks reception (ticket/invite only)

Saturday 11th October 10:30am - 5pm: Open to the public (last entry 4:30pm)

Sunday 12th October 10:30am - 5pm: Open to the public (last entry 4:30pm)

Take down

Sunday 12th October 5pm - 8pm

TICKETS

There will be a charge for entry for visitors (TBC). This will include a catalogue listing all exhibitors. There will be some great 'early-bird' offers for visitors which we will publicise pre-show and which we hope you will also tell your customers about. You will be given some free tickets for admission to the reception on Friday.

EVENING RECEPTION

There is a drinks reception planned for Friday evening. We have a growing database and will invite the best buyers, gallery and shop owners, journalists and arts professionals, and others who have helped us spread the word about the show.

CAFÉ

There will be a café serving hot and cold drinks, light lunches and cakes.

CONTACT INFORMATION

If, after reading through this information pack, you have any further questions, please email jon@tuttonandyoung.co.uk

STAND SIZES AND PRICES

We are aware that this year could be a difficult one for makers and we have managed to reduce the cost of the stands a little so they are as affordable as we can manage (for a central London venue with shell scheme etc) whilst still having some budget for marketing the show.

SOANE HALL (Ground Floor)

B 2m x 1m £815 (plus VAT - £978) (turquoise on the plan)

C 3m x 1m £985 (plus VAT -£1182) (purple on the plan)

D 2m x 2m x 1m £895 (plus VAT - £1074) (brown on the plan)

E 3m x 2m x 1m £1200 (plus VAT - £1440) (Green on the plan)

G 3.5m x 2m £1340 (plus VAT £1608) (Khaki on the plan)

THE GALLERIES (First Floor)

A 1.75m x 1m shared £700 (plus VAT - £840) (lilac on the plan)

B 2m x 1m £815 (plus VAT - £978) (turquoise on the plan)

C 3m x 1m £985 (plus VAT - £1182) (lighter green on the plan)

F 3m x 2m £1250 (plus VAT - £1500) (darker green on the plan)

CRYPT MEZZANINE

H Basic 1.8m x1m (table space only) £350 (plus VAT - £420) (Brown on the plan)

I POD 3m x 4m (space only) £650 (plus VAT - £780) (Blue on the plan)

Exhibitors are not allowed to place any obstructions such as chairs or cabinets outside the stand boundaries. Please bear this in mind if you need space for a cabinet. Please also be aware of the impact of your stand layout on neighbours especially in the basic 'A' Space where there isn't a board between you and your neighbour.

EXTRAS

Socket £60, extra light £30 (basic but ample lighting is already included), table £15. We can build storage cupboards/changing rooms on your stand if needed at an extra cost. All plus VAT.

TERMS AND CONDITIONS

1. All work must be original and by the maker.
2. Makers cannot sublet their space or any part of it to another party without prior permission.
3. Makers cannot display the work or services of another party without prior permission.
4. Deposits are not refundable; if you drop out up to 6 weeks before the event we will refund the rest of your stand fee. If you drop out after that time we will endeavour to sell the space and refund your fee, but cannot guarantee that.
5. If the event is cancelled we will return your deposit and stand fee in full but cannot be held liable for any additional expenses incurred.
6. All stand fees **must** be paid in full by 1st September to confirm a space.
7. You are responsible for your own insurance of your work and public liability. We recommend joining a-n / AIR. AIR is a membership scheme.
8. Spaces are non-transferable.
9. All work displayed should ideally be for sale.
10. A few cards and postcards can be displayed and sold but must not dominate the space.
11. If hanging work on 'outside walls' adjacent to aisles please be extra careful to properly secure work to the wall and not hang fragile objects as aisles can get crowded and visitors can brush against walls.

APPLICATION FORM - MADE LONDON
10th October - 12th OCTOBER 2025
1 Marylebone Rd, London NW1 4AQ

CONTACT NAME:.....

STAND NAME

(for Catalogue and Fascia):.....

ADDRESS:.....

.....

.....

.....

..... TEL:.....

MOBILE:.....

EMAIL:.....

WEBSITE:.....

INSTAGRAM HANDLE.....

ARE YOU A STUDIO GROUP or GALLERY? – If so, please list the name and website of all proposed exhibitors.

PLEASE INDICATE PREFERRED STAND SIZE: (see detailed notes above)

SOANE HALL (Ground Floor)

B 2m x 1m £815 (plus VAT - £978) (turquoise on the plan)

C 3m x 1m £985 (plus VAT -£1182) (purple on the plan)

D 2m x 2m x 1m £895 (plus VAT - £1074) (brown on the plan)

E 3m x 2m x 1m £1200 (plus VAT - £1440) (Green on the plan)

G 3.5m x 2m £1340 (plus VAT £1608) (Khaki on the plan)

THE GALLERIES (First Floor)

A 1.75m x 1m shared £700 (plus VAT - £840) (lilac on the plan)

B 2m x 1m £815 (plus VAT - £978) (turquoise on the plan)

C 3m x 1m £985 (plus VAT - £1182) (lighter green on the plan)

F 3m x 2m £1250 (plus VAT - £1500) (darker green on the plan)

CRYPT MEZZANINE

H Basic 1.8m x1m (table space only) £350 (plus VAT - £420) (Brown on the plan)

I POD 3m x 4m (space only) £650 (plus VAT - £780) (Blue on the plan)

If you have a particular preference of stand position, please indicate below.

Stand size Position.....

DETAILS OF IMAGES/PHOTOGRAPHS ENCLOSED:

Jpegs please, 2mb max size.

NAME OF ARTIST- (if applying as a group) TITLE MEDIUM SIZE

- 1
- 2
- 3
- 4
- 5
- 6
- 7
- 8

(Continue on separate sheet if necessary)

I UNDERSTAND THAT I AM WHOLLY RESPONSIBLE FOR THE INSURANCE OF MY ARTWORK AND OTHER BELONGINGS AGAINST THEFT OR DAMAGE WHILST IN TRANSIT, ON DISPLAY AT MADE LONDON 2025 EITHER ON MY STAND OR IN PUBLIC DISPLAY AREAS OR BEING HANDLED BY STAFF/PORTERS.

We recommend joining a-n / AIR which will insure you and your work.
Visit <http://www.a-n.co.uk/subscribe> or email info@a-n.co.uk.

I enclose my artist statement/CV

SIGNED BY:

DATE:

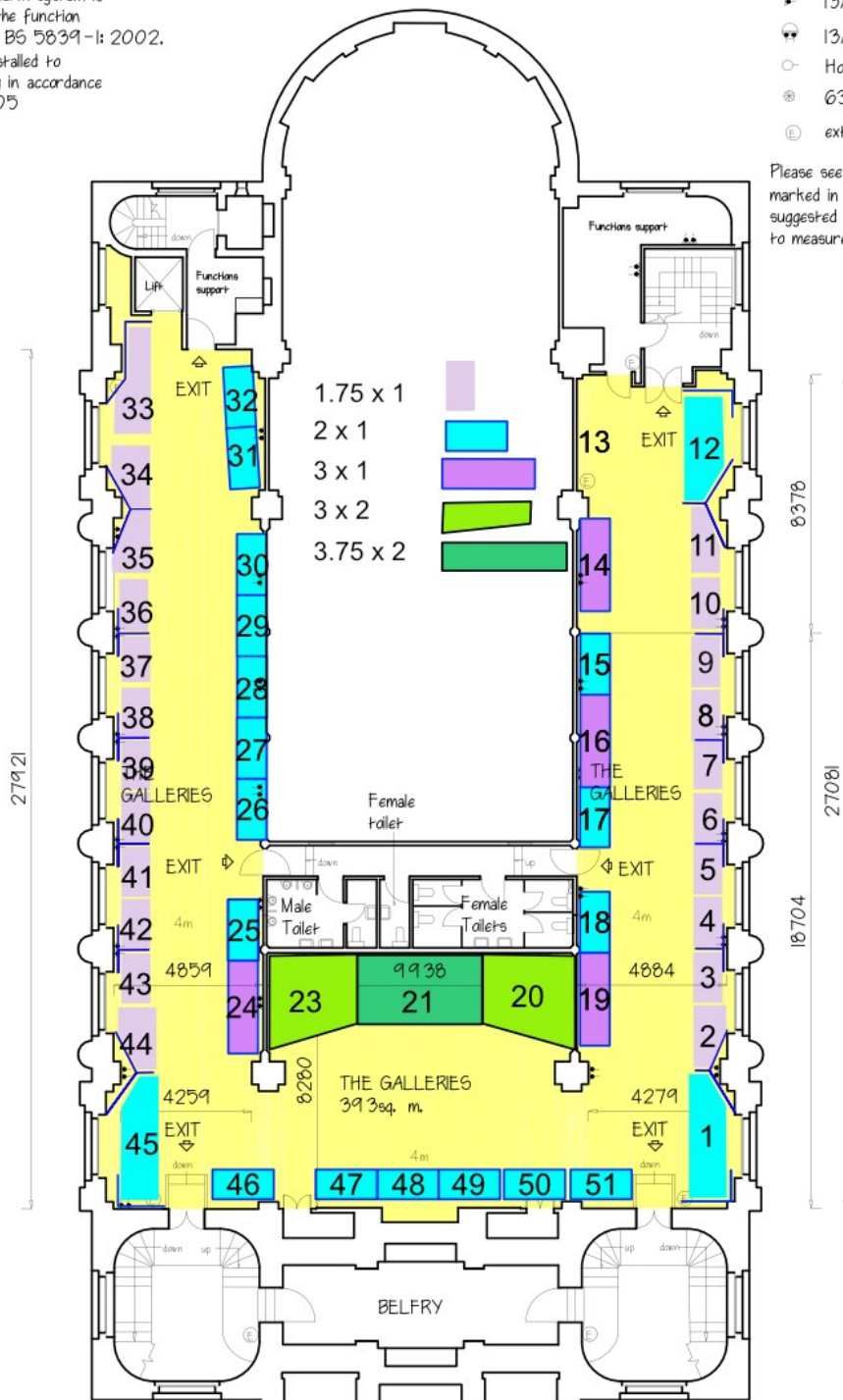
THE GALLERIES

Automatic fire alarm system is installed throughout the whole of the function space in accordance with BS 5839-1: 2002. All lighting is installed to the requirements of the building in accordance with BS 5266-1: 2005

Key

- ⚡ 13A electrical outlet
- ⚡ 13A ceiling outlet
- ⚡ House & emergency lighting
- ⚡ 63amp 3 phase
- ⚡ extinguisher

Please see specific ceiling heights marked in metres (M) suggested for producer to measure themselves.



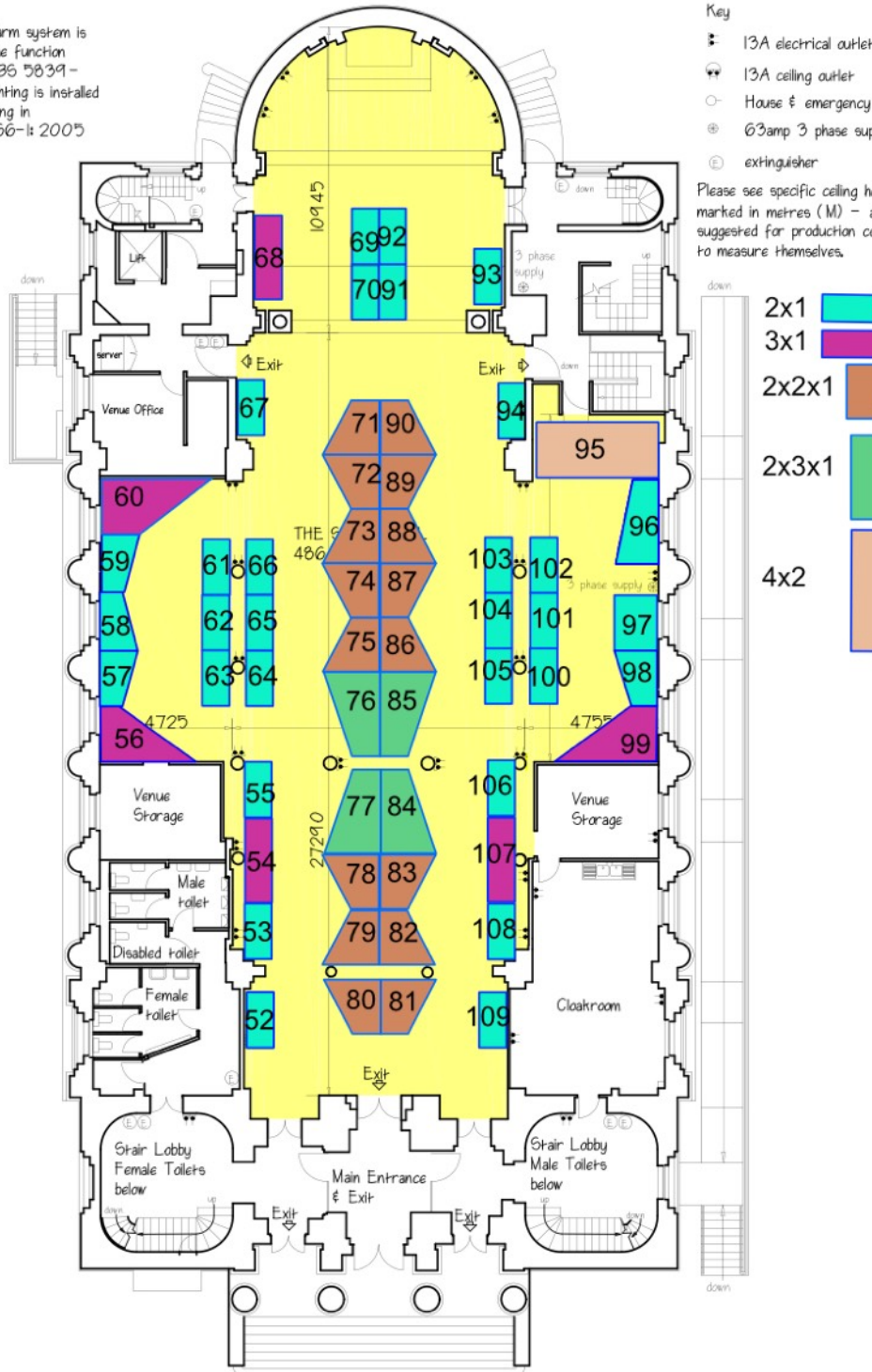
One Marylebone, 1 Marylebone Road, London, NW1 4AQ	First Floor Plan	
	SCALE 1-200	DATE 2014

THE SOANE HALL

automatic fire alarm system is to the whole of the function accordance with BS 5839-1:2. Emergency lighting is installed whole of the building in accordance with BS 5266-1:2005

- Key
- ⦿ 13A electrical outlet
 - ⦿ 13A ceiling outlet
 - ⦿ House & emergency
 - ⦿ 63amp 3 phase sup
 - ⦿ extinguisher

Please see specific ceiling heights marked in metres (M) - a suggested for production to measure themselves.



One Marylebone,
1 Marylebone Road,
London, NW 4AQ

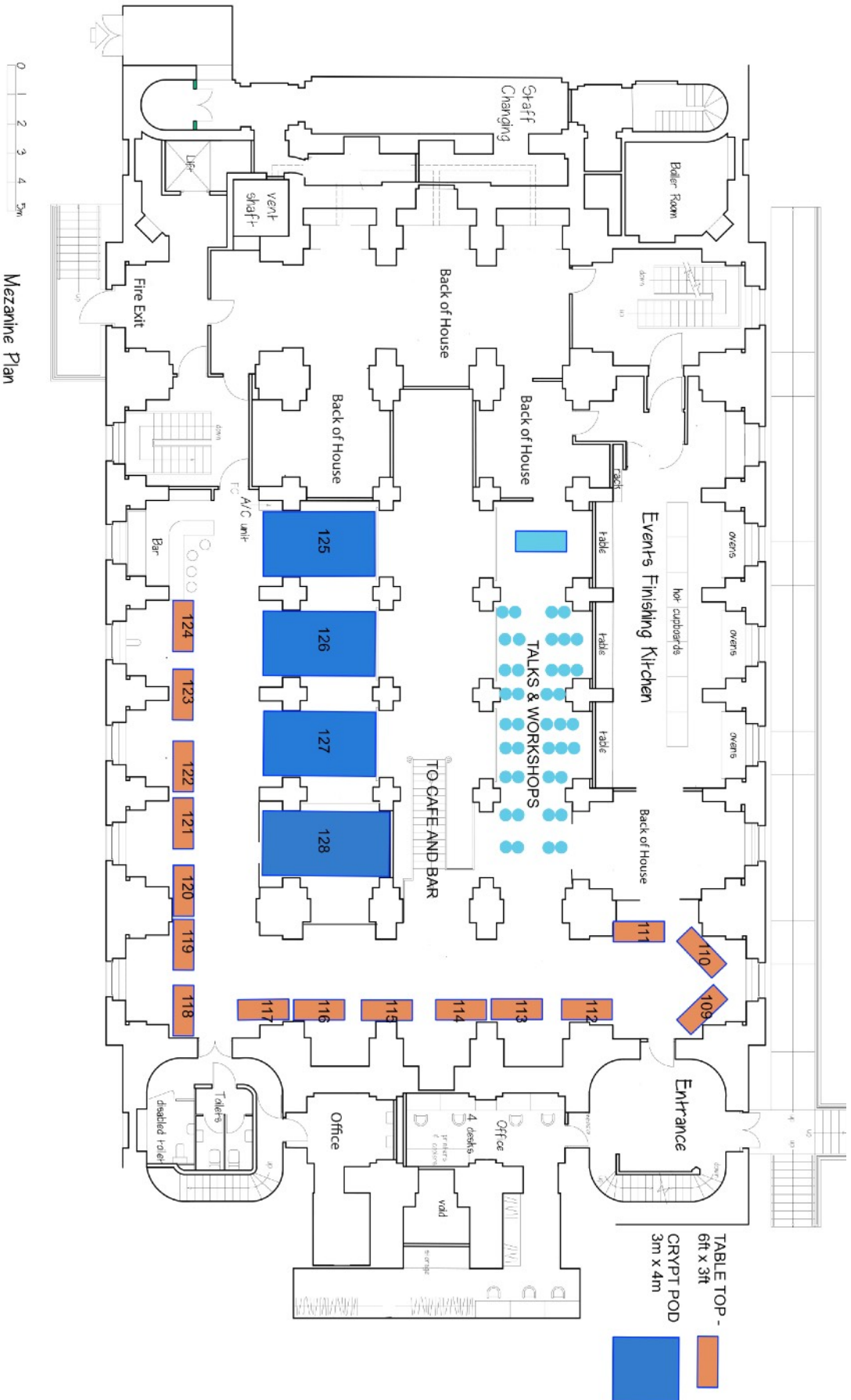
Ground Floor Plan

SCALE
1-200

DATE
June 2021

0 1 2 3 4 5m

THE CRYPT MEZZANINE



Mezzanine Plan

PETER KNIGHT M.C.I.A.T., A.B.Eng.
CHARTERED ARCHITECTURAL TECHNOLOGIST
 The White Lodge, George Street Hill, Eastwold, The River, Bress, 1264 1P2
 Tel: 01845 879000 Fax: 01845 879005 Mob: 07931092616 Email: peter@pkn.co.uk

The CAD layers used on this dwg are -

SCALE	DATE	PROJECT	DWG. TITLE	JOB No	DWG.No	REV.
1-125	May 2021	One Marlborough Road Marlborough London NW4 4DU (Formerly Holy Trinity Church)	Night Club Mezzanine Plan			